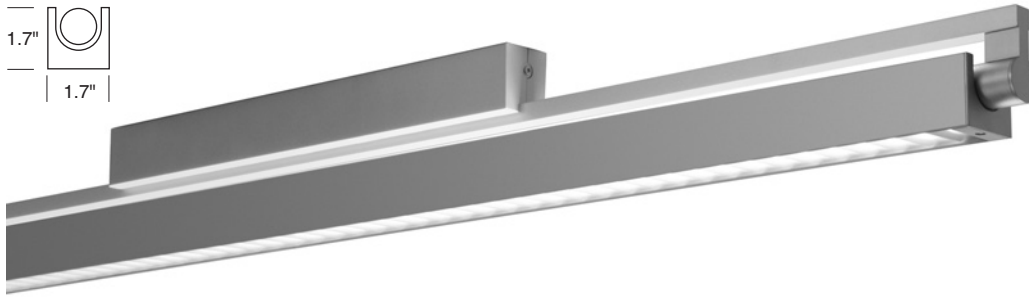
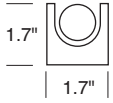


SWING T5 SQUARE WITH PRISMATIC LENS

30 SERIES

Direct/Indirect Prismatic Lens

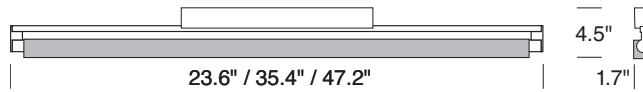


TYPE:	Model#	Voltage	Options*
ORDER NUMBER:		1-120V	SW200S
PROJECT:		2-277V	SW200W

**See back page for details.*

Please review mounting info before ordering.

Surface Model #	Length	Wattage
SW52114.230	2'	14
SW52124.230	2'	24
SW53121.330	3'	21
SW53139.330	3'	39
SW54128.430	4'	28
SW54154.430	4'	54



Dimming/emergency not available on series SW5.

**DELRAY
LIGHTING
INCORPORATED**

SW5/30

**BURBANK,
CALIFORNIA,
91505
WWW.
DELRAY
LIGHTING.
COM**

4' 54W

1-54W T5



SW44154.430

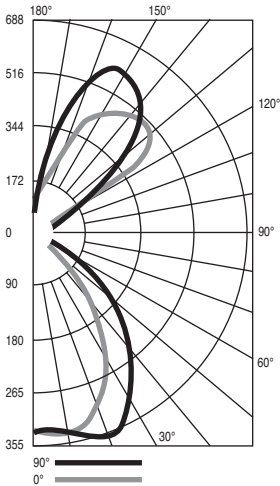
1-54W T5

G5 socket

Total lumens: 5000 mean

Total luminaire efficiency: 63.6%

CP DISTRIBUTION



COEFFICIENTS

% CEILING 80 (20% FLOOR)

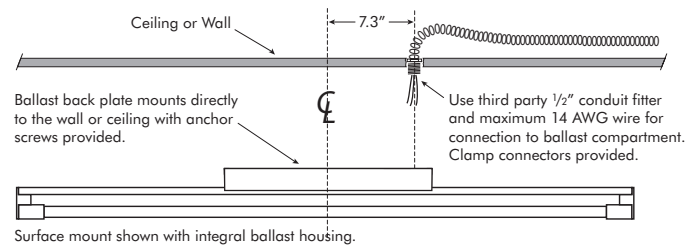
% WALL	70	50	30
0	67	67	67
1	61	58	56
2	55	51	47
3	51	45	40
4	46	39	34
5	42	35	30
6	39	31	26
7	36	28	23
8	33	26	21
9	31	23	18
10	29	21	17

SWING CONSTRUCTION

- Cast zinc aluminum alloy and aluminum extrusion construction.
- G5 twist-in lamp holders.
- UL /cUL listed for damp locations.
- Integral universal standard output 120/277V, 50/60 Hz electronic ballast.
- Back plate has *threaded 7/8"* opening for direct 16 AWG conduit feed.
- Dimming and **EM** not available.

MOUNTING

Swing features a die cast backplate with a threaded $\frac{1}{2}$ " conduit fitting at one end for direct connection to flexible conduit, which provides the smallest ballast compartment profile and avoids unsightly plates or covers on walls or ceilings. Use a third party $\frac{1}{2}$ " conduit fitting and maximum 14 AWG wire for communication to the ballast. Detailed installation instructions are available at www.delraylighting.com.



NOTE: POWER DOES NOT ENTER AT THE CENTER

OPTIONS

J-BOX MOUNT

Mounting the SW4 and SW5 series with standard ballast housing to a recessed J-box requires a 3" mud ring, the holes in line with the direction of the fixture. Order **SW200**, available in **S**-silver or **W**-white.

