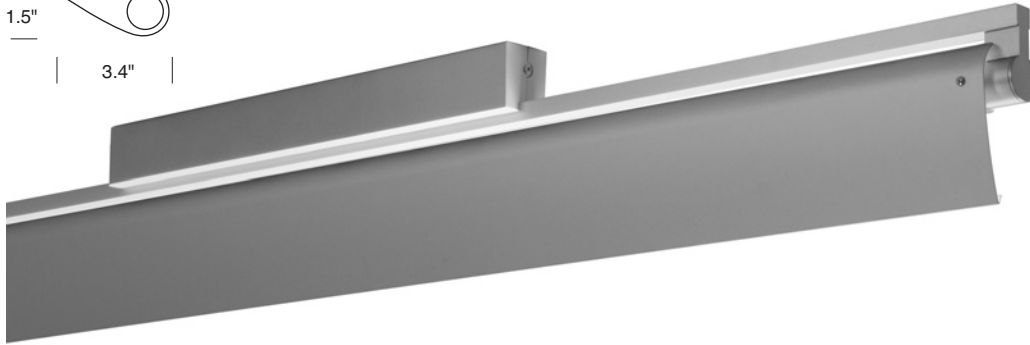
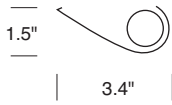


# SWING T5 SOLID ASYMMETRIC REFLECTOR

**DELRAY  
LIGHTING  
INCORPORATED**

## 19 SERIES

Solid Asymmetric Reflector



**TYPE:**

**Model#**

**Voltage**

**Options\***

**ORDER NUMBER:**

1-120V

**SW200S**

2-277V

**SW200W**

**PROJECT:**

Ceiling Mount

Wall Mount



*\*See back page for details.*

**Please review mounting info before ordering.**

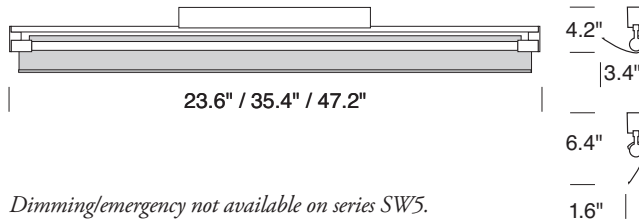
**Surface**

**Model #**

**Length**

**Wattage**

|             |    |    |
|-------------|----|----|
| SW52114.219 | 2' | 14 |
| SW52124.219 | 2' | 24 |
| SW53121.319 | 3' | 21 |
| SW53139.319 | 3' | 39 |
| SW54128.419 | 4' | 28 |
| SW54154.419 | 4' | 54 |



*Dimming/emergency not available on series SW5.*

**SW5 / 19**

BURBANK,  
CALIFORNIA,  
91505  
WWW.  
DELRAY  
LIGHTING.  
COM

JAN 2014

## 4' 54W

### 1-54W T5



#### SW44154.419

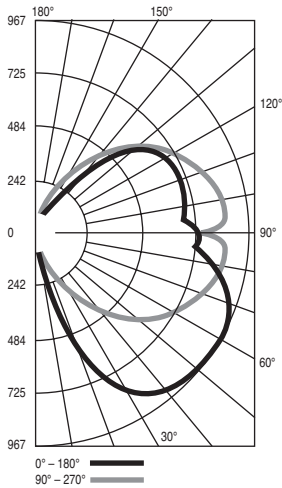
1-54W T5

G5 socket

Total lumens: 5000 mean

Total luminaire efficiency: 58.2%

### CP DISTRIBUTION



### COEFFICIENTS

#### % CEILING 80 (20% FLOOR)

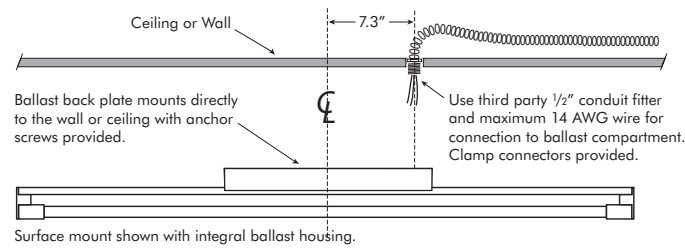
| % WALL | 70 | 50 | 30 |
|--------|----|----|----|
| 0      | 78 | 78 | 78 |
| 1      | 70 | 66 | 62 |
| 2      | 63 | 57 | 52 |
| 3      | 57 | 49 | 43 |
| 4      | 52 | 43 | 37 |
| 5      | 47 | 38 | 32 |
| 6      | 43 | 34 | 28 |
| 7      | 40 | 31 | 24 |
| 8      | 37 | 27 | 22 |
| 9      | 34 | 25 | 19 |
| 10     | 32 | 23 | 17 |

## SWING CONSTRUCTION

- Cast zinc aluminum alloy and aluminum extrusion construction.
- G5 twist-in lamp holders.
- UL /cUL listed for damp locations.
- Integral universal standard output 120/277V, 50/60 Hz electronic ballast.
- Back plate has *threaded 7/8"* opening for direct 16 AWG conduit feed.
- Dimming and **EM** not available.

### MOUNTING

Swing features a die cast backplate with a threaded  $\frac{1}{2}$ " conduit fitting at one end for direct connection to flexible conduit, which provides the smallest ballast compartment profile and avoids unsightly plates or covers on walls or ceilings. Use a third party  $\frac{1}{2}$ " conduit fitting and maximum 14 AWG wire for communication to the ballast. Detailed installation instructions are available at [www.delraylighting.com](http://www.delraylighting.com).



**NOTE: POWER DOES NOT ENTER AT THE CENTER**

## OPTIONS

### J-BOX MOUNT

Mounting the SW4 and SW5 series with standard ballast housing to a recessed J-box requires a 3" mud ring, the holes in line with the direction of the fixture. Order **SW200**, available in **S**-silver or **W**-white.

