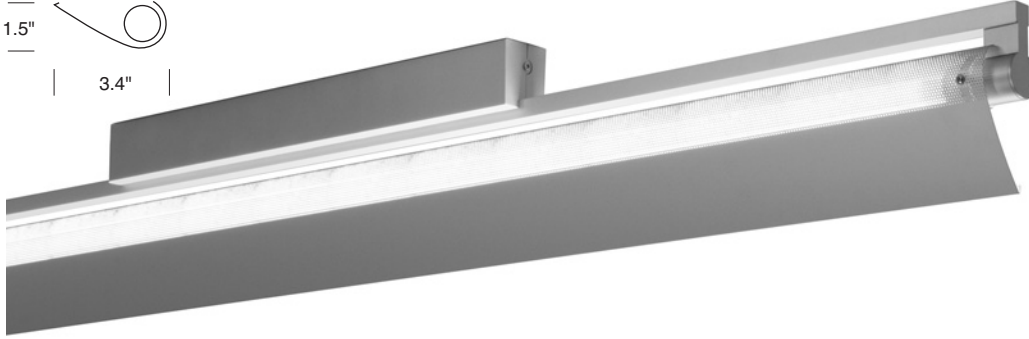
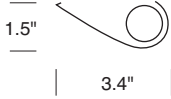


# SWING T5 ASYMMETRIC REFLECTOR WITH PARTIAL PERFORATION

**DELRAY  
LIGHTING  
INCORPORATED**

## 17 SERIES

Asymmetric Reflector with Partial Perforation



**TYPE:**

**Model#**

**Voltage Options\***

**ORDER NUMBER:**

**1-120V SW200S**  
**2-277V SW200W**

**PROJECT:**

Ceiling Mount

Wall Mount



*\*See back page for details.*

**Please review mounting info before ordering.**

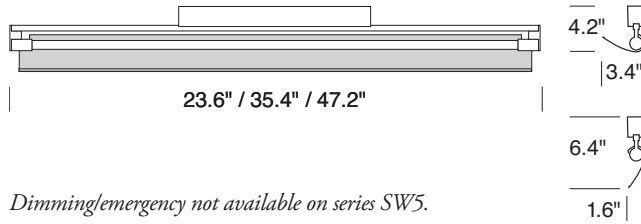
**Surface**

**Model #**

**Length**

**Wattage**

SW52114.217	2'	14
SW52124.217	2'	24
SW53121.317	3'	21
SW53139.317	3'	39
SW54128.417	4'	28
SW54154.417	4'	54



*Dimming/emergency not available on series SW5.*

# SW5 / 17

BURBANK,  
CALIFORNIA,  
91505  
WWW.  
DELRAY  
LIGHTING.  
COM

## 4' 54W

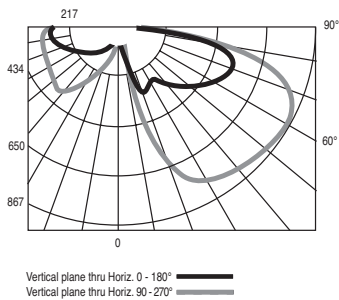
### 1-54W T5



#### SW44154.417

1-54W T5  
G5 socket  
Total lumens: 5000 mean  
Total luminaire efficiency: 68.5%

### CP DISTRIBUTION



### COEFFICIENTS

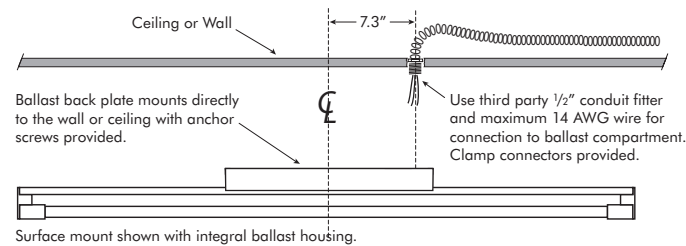
	% CEILING 80 (20% FLOOR)	
% WALL	70	50 30
0	69	69 69
1	62	59 56
2	56	51 47
3	51	44 40
4	46	39 34
5	42	35 29
6	39	31 26
7	36	28 22
8	33	25 20
9	31	23 18
10	29	21 16

## SWING CONSTRUCTION

- Cast zinc aluminum alloy and aluminum extrusion construction.
- G5 twist-in lamp holders.
- UL /cUL listed for damp locations.
- Integral universal standard output 120/277V, 50/60 Hz electronic ballast.
- Back plate has *threaded 7/8"* opening for direct 16 AWG conduit feed.
- Dimming and **EM** not available.

### MOUNTING

Swing features a die cast backplate with a threaded  $\frac{1}{2}$ " conduit fitting at one end for direct connection to flexible conduit, which provides the smallest ballast compartment profile and avoids unsightly plates or covers on walls or ceilings. Use a third party  $\frac{1}{2}$ " conduit fitting and maximum 14 AWG wire for communication to the ballast. Detailed installation instructions are available at [www.delraylighting.com](http://www.delraylighting.com).



**NOTE: POWER DOES NOT ENTER AT THE CENTER**

## OPTIONS

### J-BOX MOUNT

Mounting the SW4 and SW5 series with standard ballast housing to a recessed J-box requires a 3" mud ring, the holes in line with the direction of the fixture. Order **SW200**, available in **S**-silver or **W**-white.

