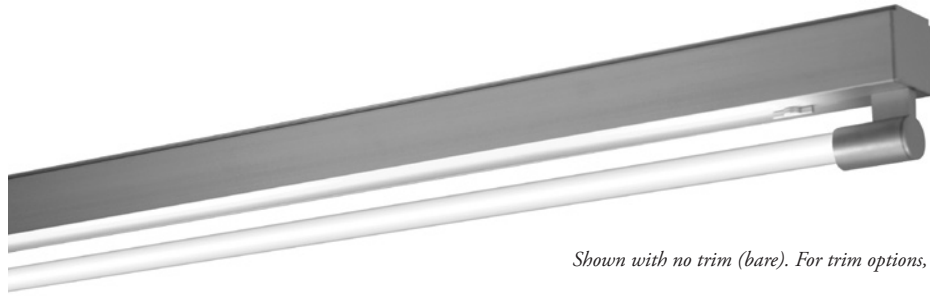


# STICK 2' T5 SINGLE LAMP SURFACE

**DELRAY  
LIGHTING  
INCORPORATED**



*Shown with no trim (bare). For trim options, see back page.*

**TYPE:**

**Model #**                      **Voltage**                      **Options\***                      **Trim \***

**ORDER NUMBER:**

**1-120V**                      **SAC**  
**2-277V**                      **SPF4**

**PROJECT:**

*\*See back page for details.*

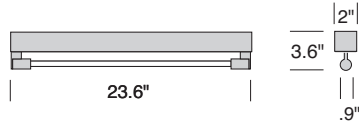
**Please review mounting info before ordering.**

**Run Length:**

(enter in multiples of 2 ft.)

**Stand Alone**

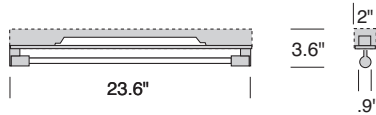
Fixture, rail and end caps included.



Model #	Length	Wattage
ST52114	2'	1-14
ST52124	2'	1-24

**Continuous Run**

Rail parts must be ordered separately.



Model #	Length	Wattage
ST72114	2'	1-14
ST72124	2'	1-24

**ST5 & ST7-2 ft.**

**BURBANK,  
CALIFORNIA,  
91505  
WWW.  
DELRAY  
LIGHTING.  
COM**

## STICK CONSTRUCTION

### INLINE PENDANT

- 2' dual inline surface or pendant fixture that can be stand alone or connected to additional 2', 3', 4' or 6' Stick sections. (See Stick connection info below to order).
- Construction is cast zinc aluminum alloy and aluminum extrusion with matte anodized finish.
- Optional suspension is field-adjustable aircraft cable, with push button glider. Order **SAC**.

- G5 twist-in lamp holders.
- Standard output electronic ballasts are 120/277V 50/60 Hz universal in integral housing.
- Back plate has 7/8" opening for direct conduit feed, not intended for j-box mount.
- U.L. listed for damp locations.

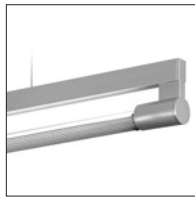
### EM & DIMMING

- Neither EM nor dimming are available.

### TRIM OPTIONS



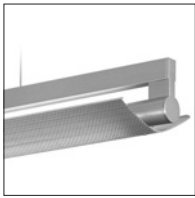
BARE



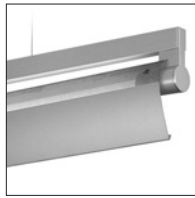
TRIM 11



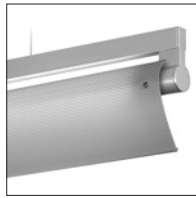
TRIM 12



TRIM 13



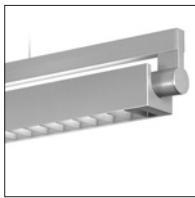
TRIM 17



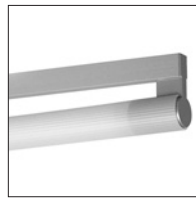
TRIM 18



TRIM 19



TRIM 20



TRIM 21



TRIM 22



TRIM 23

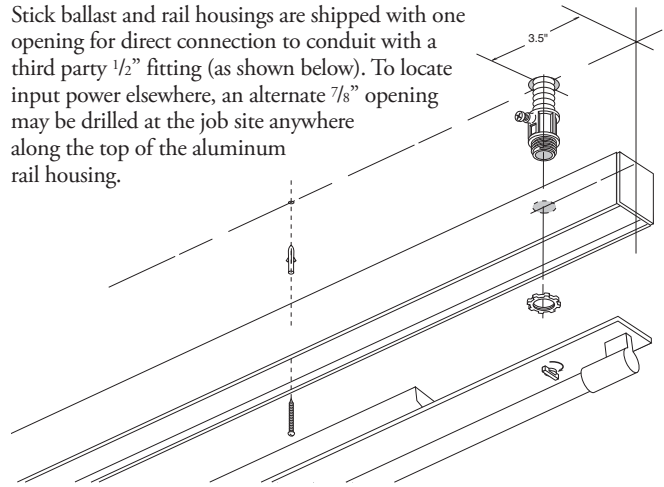


TRIM 30

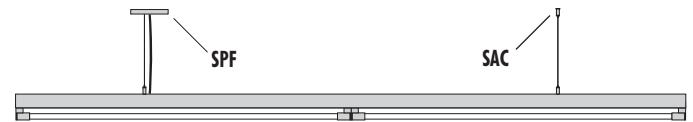
## OPTIONS

### BALLAST/RAIL MOUNT INFO

Stick ballast and rail housings are shipped with one opening for direct connection to conduit with a third party 1/2" fitting (as shown below). To locate input power elsewhere, an alternate 7/8" opening may be drilled at the job site anywhere along the top of the aluminum rail housing.



### STICK SUSPENSION & CONNECTION OPTIONS



**SAC** – Standard 8' adjustable AC cable assembly.

**SPF4** – Power feed canopy with 8' three-conductor silver braided cord, standard output.

### BALLAST HOUSING BOX COVER

Order **S100P** to mount ballast to a recessed J-box.

