

Metal Halide Remodel Downlight Installation Instructions

9/93

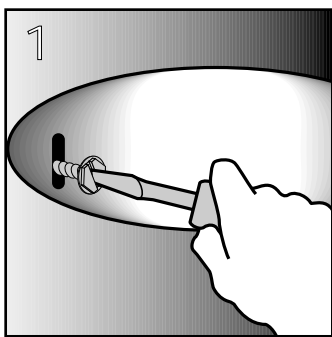
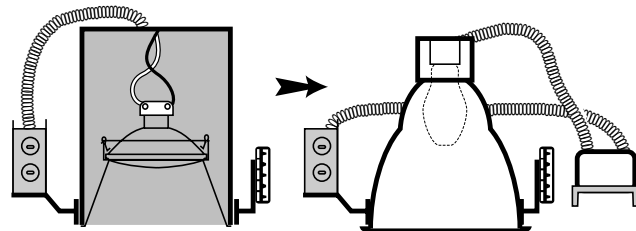
TYPE:7

DELRAY
LIGHTING
INCORPORATED

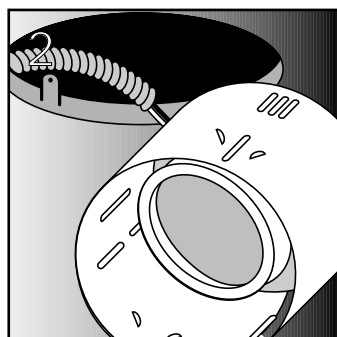
For converting incandescent downlights

WARNING: Risk of fire or electric shock. Install this kit only in a fixture that has the construction features shown in these installation instruction drawings.

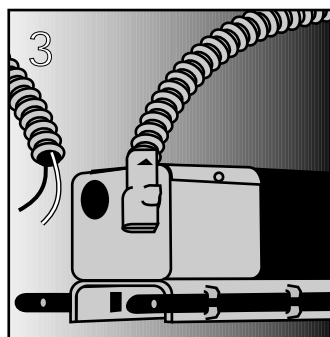
See back page for listing of U.L. Classification



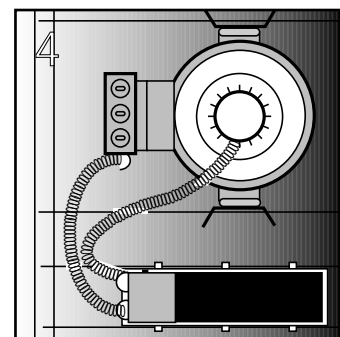
1
Unscrew can retaining screws and pull can out of ceiling



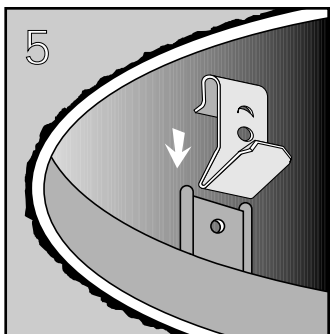
2
Carefully cut socket wires and detach flex from can



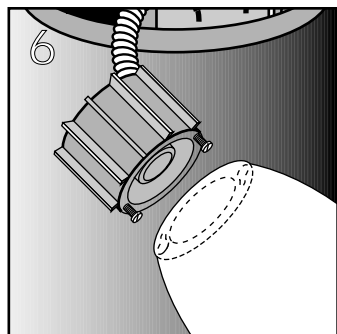
3
Attach power feed to ballast assembly and wire-up



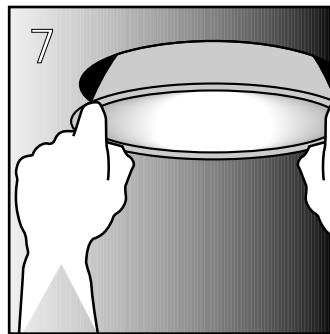
4
WARNING: ballast and ballast tray must be 12" from reflector



5
Snap on MC2 spring clips to mounting frame

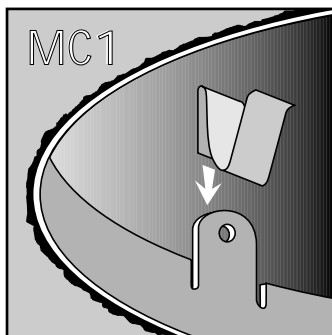


6
Attach reflector to lamp holder by keyhole slots and tighten screws

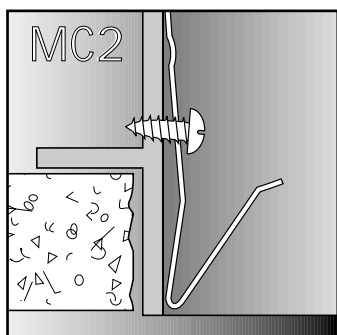


7
Slide reflector into frame, insert proper lamp and check operation

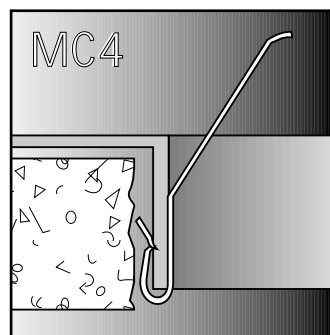
Note:
The existing fixture you are retro-fitting may require other clip options. If you have any problem with the MC2 clip, please study the following clip options to determine the best clip



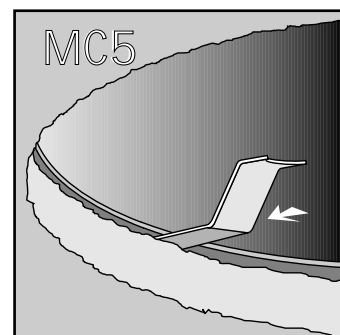
MC1
Clip snaps onto mounting frame screw holes



MC2
MC2 clip can be screwed into side of frame



MC4
Clip mounts under mounting frame collar



MC5
For frames with no collar, clip slides between frame and ceiling

**FIXTURE CONVERSION, RETROFIT CLASSIFIED BY UNDERWRITERS LABORATORIES INC.®
FOR USE WITH IDENTIFIED FIXTURES ONLY**

DELRAY 7.5"	LIGHTOLIER 7.5"	HALO 7.5"	MARCO 7.5"	PRESCOLITE 7.5"	PROGRESS 7.5"	OMEGA 7.5"	CAPRI 7.5"	E. PRICE 7.5"	K. Verson 7.5"	MiROFLECTOR 7.5"	KIRLIN 7.5"	LITHONIA 7.5"
RH75035 RH75050 RH75070 RH75100	AA7C CPF7 7709 7055	H7800	MD420			C4200 C4500		DL56	D5435 D7424			
8" RH8035 RH8050 RH8070 RH8100	8"	8"	8" ME510	8" 1059 1229 1286	8"	8" C5800	8"	8"	8" B7224 B7233 C7304	8"	8"	8"
9" RH9035 RH9050 RH9070 RH9100 RH9175	9" WW9	9"	9" MD520 ME512 ME513	9" 1226 1276 1288	9"	9"	9"	9"	9" C7305 C7326	9" A1023 A1033	9"	9" R9AC
11" RH11035 RH11050 RH11070 RH11100 RH11175	11"	11"	11"	11"	11"	11"	11"	11"	11" D3445 D3473	11"	11"	11"

WARNING Risk of fire or electric shock. Reflector kit installation requires knowledge of fluorescent lighting fixture electrical systems. If not qualified, do not attempt installation. Contact a qualified electrician.

1. To ensure the success of the installation, be sure to read these instructions and review the diagram thoroughly before beginning.
2. All electrical connections must be in accordance with local codes, ordinances or the National Electrical Code. If you are unfamiliar with methods of installing electrical wiring, secure the services of a qualified licensed electrician.
3. Before starting the installation, disconnect the power by turning off the circuit breaker or by removing the fuse at the fuse box. Turning the power off using the light switch is not sufficient to prevent electrical shock.

NOTE: The important safeguards and instructions appearing in this manual are not meant to cover all possible conditions and situations that may occur. It must be understood that common sense, caution and care are factors which cannot be built into any product. These factors must be supplied by the person(s) caring for and operating the fixture. Check the contents of the box. You should receive:

- Wiring harness consisting of J-box with ballast and socket cap.
- Wire connectors, flex connector, J-box connector
- Reflector
- Mounting Clips (optional)

Wire the luminaire following the wiring diagram on the ballast or inside the box. Use U.L. Listed wire connectors suitable for the size, type and number of conductors. No loose strands or loose wires should be present. Secure the wire connectors with U.L. listed electrical tape and wire nuts. Install the lightbulbs (not included). Refer to the relamping label located on the reflector for correct lamp wattage - Do not exceed recommended wattage. Restore electricity and check your new lighting fixture.