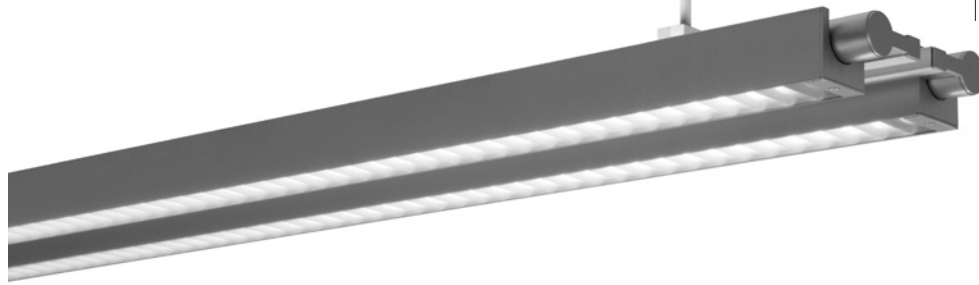
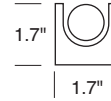


## SWING T5 SQUARE WITH PRISMATIC LENS

### 30 SERIES

Direct/Indirect Prismatic Lens



<b>TYPE:</b>	<b>Model#</b>	<b>Voltage</b>	<b>Options*</b>	<b>Dimming*</b>	
<b>ORDER NUMBER:</b>		1-120V	SAC	SPF3	SD3
<b>PROJECT:</b>		2-277V	SEM	SPF4	SD5
			SMB	SPF5	SD8
			SWRB		SD9
					SD10

\*See back page for details.

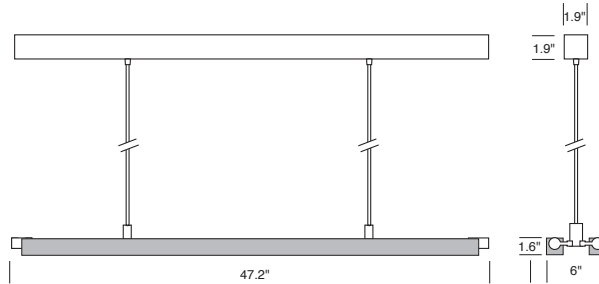
**Run Length:**  
(enter in multiples of 4 ft.)

Please review mounting info before ordering.

#### Stand Alone

Fixture, rail and end caps included.

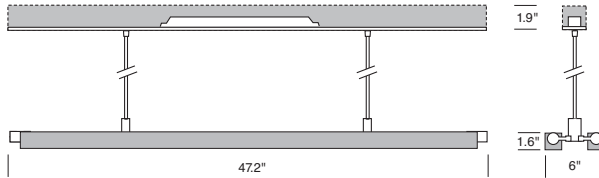
Model #	Length	Wattage
SW44228.430	4'	28
SW44254.430	4'	54



#### Continuous Run

Rail parts must be ordered separately.

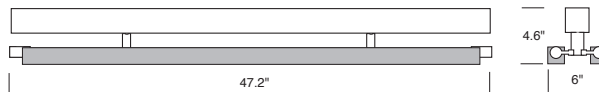
Model #	Length	Wattage
SW64228.430	4'	28
SW64254.430	4'	54



#### Stand Alone

Fixture, rail and end caps included.

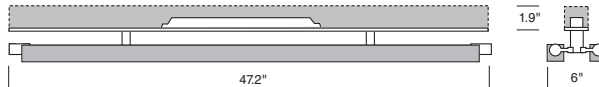
Model #	Length	Wattage
SW54228.430	4'	28
SW54254.430	4'	54



#### Continuous Run

Rail parts must be ordered separately.

Model #	Length	Wattage
SW74228.430	4'	28
SW74254.430	4'	54



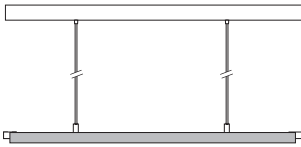
**DELRAY  
LIGHTING  
INCORPORATED**

**SW6 & SW7 / 30**

BURBANK,  
CALIFORNIA,  
91505  
WWW.  
DELRAY  
LIGHTING.  
COM

## 4' 2x54W

### 2-54W T5



### SW44254.430

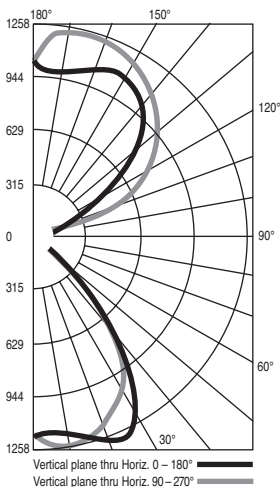
2-54W T5 HO

G5 socket

Total lumens: 10,000 mean

Total luminaire efficiency: 62.3%

### CP DISTRIBUTION



### COEFFICIENTS

% CEILING 80	(20% FLOOR)		
% WALL 70	50	30	
0	65	65	65
1	59	56	54
2	54	49	46
3	49	43	39
4	45	38	34
5	41	34	29
6	38	31	26
7	35	28	23
8	32	25	20
9	30	23	18
10	28	21	16

## SWING CONSTRUCTION

- Cast zinc aluminum alloy and aluminum extrusion construction.
- G5 twist-in lamp holders.
- U.L. listed for damp locations.

### DOUBLE LAMP PENDANT

- Two adjustable 8 ft. gray 600V, 18/5 AWG power cords.
- Universal standard output 120/277V, 50/60 Hz electronic ballast, in a remote housing.

- Dimming and emergency battery available. Pendant distance may not exceed 3 ft. (See options at right.)
- Back plate has 7/8" opening for direct conduit feed.

### DOUBLE LAMP SURFACE

- Integral universal standard output 120/277V, 50/60 Hz electronic ballast.
- Back plate has 7/8" opening for direct 14 AWG conduit feed.
- Dimming and emergency battery available. (See options at right.)

## OPTIONS

### DIMMING BALLASTS

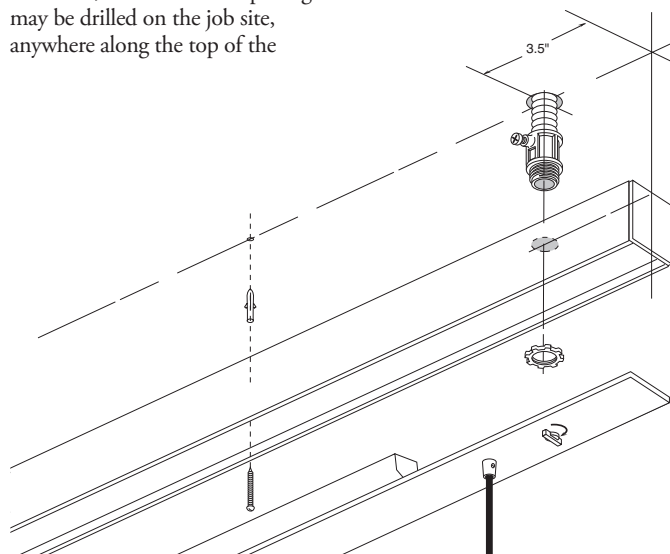
Dimming ballast replaces standard canopy. All ballasts require compatible dimmers. Voltage must be specified.

Cat. #	Type	Wattage
SD3	Advance Mark X	54
SD5	Advance Mark VII	54
SD8	Lutron Hi Lume FDB	28/54
SD9	Lutron Eco System	28/54
SD10	Stepped dim, 50% for 2x28 only	2x28

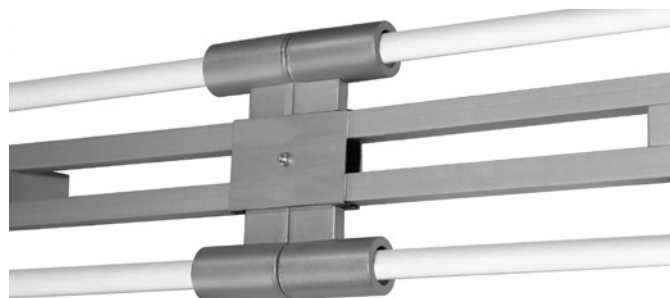
### MOUNTING INFORMATION

SW6 and SW7 Swing rail housings ship with one power input opening (as shown below) for direct connection to conduit using third party 1/2" fittings. To locate the power input elsewhere, alternative 7/8" openings may be drilled on the job site, anywhere along the top of the

aluminum rail housing. All double Swing fixtures have the option to suspend with aircraft cable (SAC) and optional power feed canopy (SPF3, SPF4 and SPF5) with silver braided cord.



### CONTINUOUS SUSPENDED ROWS



For two or more pendant fixtures mounted end to end, order and install **SDC** swing double connector

to align fixtures and prevent inter-fixture collision.

### EMERGENCY BALLASTS

Emergency ballast provides 825 lumens for 90 minutes. Charge indicator light and test switch visible from below. Voltage must be specified. Order **SEM**.

### BALLAST HOUSING BOX COVER

Order **S100P** to mount ballast to a recessed J-box.

