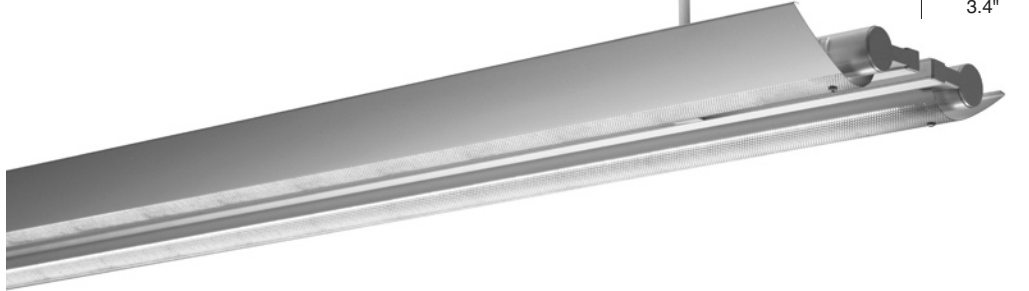


# SWING T5 ASYMMETRIC REFLECTOR WITH PARTIAL PERFORATION

## 17 SERIES

Asymmetric Reflector  
with Partial Perforation



<b>TYPE:</b>	<b>Model#</b>	<b>Voltage</b>	<b>Options*</b>	<b>Dimming*</b>
		1-120V	<b>SAC</b>	<b>SPF3</b>
<b>ORDER NUMBER:</b>		2-277V	<b>SEM</b>	<b>SPF4</b>
			<b>SMB</b>	<b>SPF5</b>
<b>PROJECT:</b>			<b>SWRB</b>	<b>SD3</b>
				<b>SD5</b>
				<b>SD8</b>
				<b>SD9</b>
				<b>SD10</b>

*\*See back page for details.*

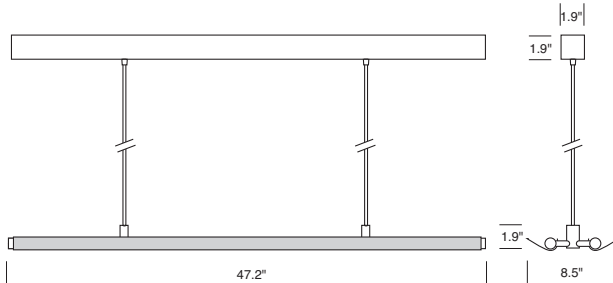
**Run Length:**  
(enter in multiples of 4 ft.)

**Please review mounting info before ordering.**

### Stand Alone

Fixture, rail and end caps included.

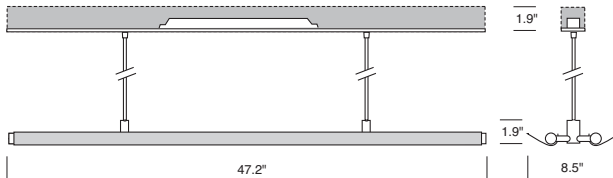
Model #	Length	Wattage
SW44228.417	4'	28
SW44254.417	4'	54



### Continuous Run

Rail parts must be ordered separately.

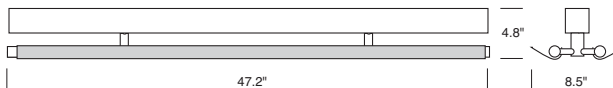
Model #	Length	Wattage
SW64228.417	4'	28
SW64254.417	4'	54



### Stand Alone

Fixture, rail and end caps included.

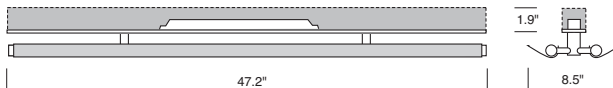
Model #	Length	Wattage
SW54228.417	4'	28
SW54254.417	4'	54



### Continuous Run

Rail parts must be ordered separately.

Model #	Length	Wattage
SW74228.417	4'	28
SW74254.417	4'	54



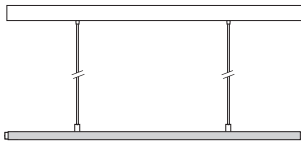
**DELRAY  
LIGHTING  
INCORPORATED**

**SW6 & SW7 / 17**

BURBANK,  
CALIFORNIA,  
91505  
WWW.  
DELRAY  
LIGHTING.  
COM

## 4' 54W

### 2-54W T5



#### SW44254.417

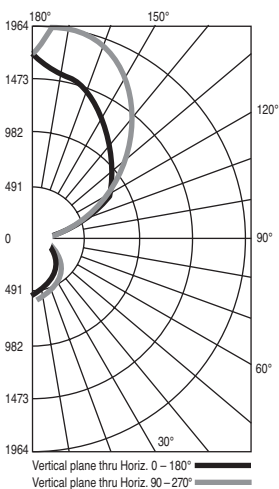
2-54WT5 HO

G5 socket

Total lumens: 10000 mean

Total luminaire efficiency: 58.3%

### CP DISTRIBUTION



### COEFFICIENTS

% CEILING 80	(20% FLOOR)		
	% WALL 70	50	30
0	58	58	58
1	53	50	48
2	48	44	40
3	44	38	34
4	40	34	29
5	36	30	25
6	33	27	22
7	31	24	19
8	28	22	17
9	26	20	15
10	25	18	14

## SWING CONSTRUCTION

- Cast zinc aluminum alloy and aluminum extrusion construction.
- G5 twist-in lamp holders.
- U.L. listed for damp locations.

### DOUBLE LAMP PENDANT

- Two adjustable 8 ft. gray 600V, 18/5 AWG power cords.
- Universal standard output 120/277V, 50/60 Hz electronic ballast, in a remote housing.

- Dimming and emergency battery available. Pendant distance may not exceed 3 ft. (See options at right.)
- Back plate has 7/8" opening for direct conduit feed.

### DOUBLE LAMP SURFACE

- Integral universal standard output 120/277V, 50/60 Hz electronic ballast.
- Back plate has 7/8" opening for direct 14 AWG conduit feed.
- Dimming and emergency battery available. (See options at right.)

## OPTIONS

### DIMMING BALLASTS

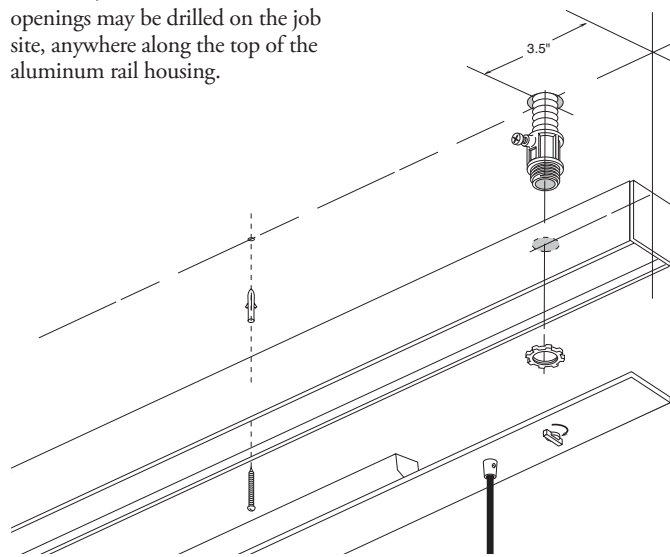
Dimming ballast replaces standard canopy. All ballasts require compatible dimmers. Voltage must be specified.

Cat. #	Type	Wattage
<b>SD3</b>	Advance Mark X	54
<b>SD5</b>	Advance Mark VII	54
<b>SD8</b>	Lutron Hi Lume FDB	28/54
<b>SD9</b>	Lutron Eco System	28/54
<b>SD10</b>	Stepped dim, 50% for 2x28 only	2x28

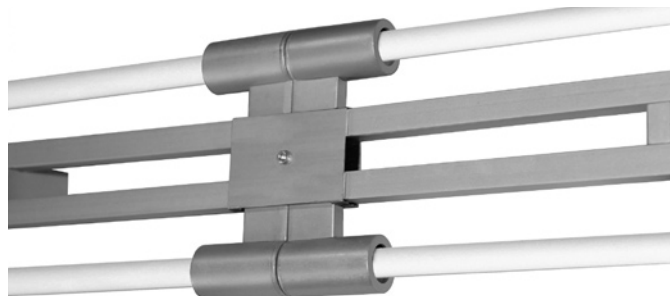
### MOUNTING INFORMATION

SW6 and SW7 Swing rail housings ship with one power input opening (as shown below) for direct connection to conduit using third party 1/2" fittings. To locate the power input elsewhere, alternative 7/8" openings may be drilled on the job site, anywhere along the top of the aluminum rail housing.

All double Swing fixtures have the option to suspend with aircraft cable (**SAC**) and optional power feed canopy (**SPF3**, **SPF4** and **SPF5**) with silver braided cord.



### CONTINUOUS SUSPENDED ROWS



For two or more pendant fixtures mounted end to end, order and install **SDC** swing double connector to align

fixtures and prevent inter-fixture collision.

### EMERGENCY BALLASTS

Emergency ballast provides 825 lumens for 90 minutes. Charge indicator light and test switch visible from below. Voltage must be specified. Order **SEM**.

### BALLAST HOUSING BOX COVER

Order **ST00P** to mount ballast to a recessed J-box.

