

4" CFL/LED CYLINDER WITH DOWNLIGHT

DELRAY
LIGHTING
INCORPORATED

6300-4"



TYPE:

PROJECT:

ORDER NUMBER:

Model#	LEDs	Voltage	Ballast	LED Option	Downlight
	R -Red	1 -120V	B4DM -dimming	BDIM -three channel analog interface	B4MR16
	B -blue	2 -277V	D1 -dimming		
	White		D3 -dimming		
	SQ -RGB		D5 -dimming	BDMOD -DMX interface module	
			D8 -dimming	BTRAXW -white	
			D9 -dimming	BTRAXB -black	

Example:

6309	SQ	2	B4DM	BTRAXB	B6MR16
------	----	---	------	--------	--------

Other Options

B4SRB-remote ballast

BLA-pipe mount

B4XP-extra pendant length (inches):

CONSTRUCTION

- Matte white acrylic diffuser provides even illumination.
- Fluorescent fixtures are U.L. listed for damp locations; LED fixtures for dry location only.

CANOPY

- White or silver, with matching cord.
- Fluorescent canopy is flat, 5-inch o.d. and mounts to standard J-box.
- LED gear (drivers, DMX and dimming modules) is remote mounted.
- Standard LED canopy is a 21-inch long, 3.3-inch diameter tube.
- Standard mount is 6 ft. adjustable aircraft cable and power cord. Order **B4XP** for extra pendant length
- Hard stem also available. Order **BLA**.

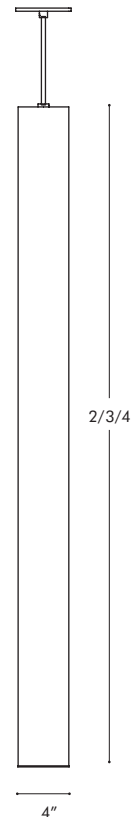
BALLASTS

- Order **B4DM** for dimming, **B4SRB** for remote LED or fluorescent in accessible ceilings or panels.

OPTIONAL DOWNLIGHT

- Order **B4MR16**.
- Uses LED MR16 2-pin lamps (by others).

- 6304**-2 ft. T5
- 6305**-3 ft. T5
- 6306**-4 ft. T5
- 6307**-2 ft. LED*
- 6308**-3 ft. LED*
- 6309**-4 ft. LED*



*Specify LED color: Red, Blue, White, or SQ-RGB sequencer

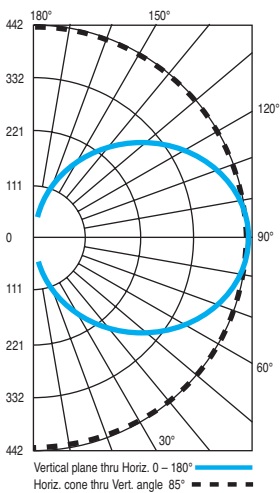
BURBANK,
CALIFORNIA,
91505
WWW.
DELRAY
LIGHTING.
COM

LED

6304
6305
6306
6307
6308
6309



CP DISTRIBUTION



COEFFICIENTS

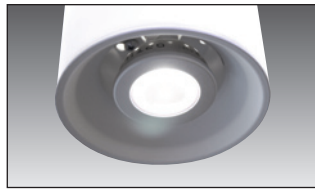
% CEILING 80 (20% FLOOR)			
% WALL	70	50	30
0	88	88	88
1	75	70	65
2	67	58	51
3	60	50	42
4	54	43	35
5	49	38	29
6	45	33	25
7	41	30	22
8	38	27	19
9	35	24	17
10	33	22	15

NOTES

6306
1-54W T5 HO
G13 base
Total lumens: 3850 mean
Total luminaire efficiency: 82%

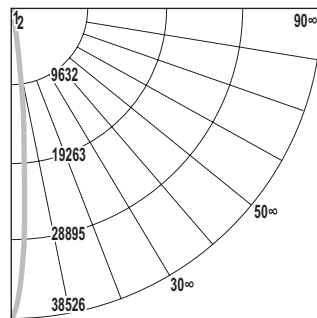
MR16

B4MR16—4" downlight

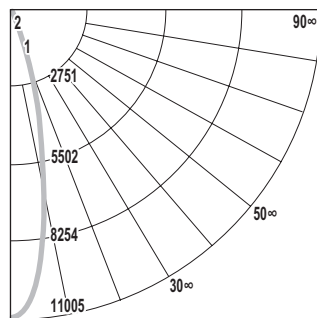


CP DISTRIBUTION

SPOT

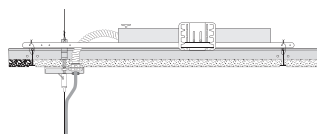


FLOOD



REMOTE BALLAST

Install ballast enclosure (supplied) maximum 10 ft. from fixture; must remain accessible. Order **B4SRB**.



ACRYLIC DIFFUSER CLEANING

Warning: Do not clean with ammonia based cleaners (e.g. Windex®). Use only water or cleaners specifically formulated for cleaning plastics.

RGB CONTROL OPTIONS

RGB SEQUENCER OPTIONS

- Osram part no. OTRGBSEQUENCER supplied.

BDIM

- Osram part no. OTRGBDIM supplied.
- Dimming control interface for RGB LED that synchronizes the color in multiple fixtures.
- Colors are mixed manually by adjusting three 0-10V wall dimmers, or three 100K Ohm potentiometers. 0-10V converter is required for DMX control. Additional 18/4 control cable, from fixture to canopy, is supplied. Controls by others.

BDMXMOD

- Osram part no. OTDMXRGB supplied.
- DMX control interface for RGB LED.
- Provides DMX control that meet USITT DMX-512A or DMX512 (DIN 56930-2). No converter is required. DMX controls by others.
- A second 3-conductor control cable to fixture canopy is supplied.

TRAXON LIGHT-DRIVE RGB

BTRAXW—white controller
BTRAXB—black controller

Standalone, wall-mounted, plug 'n' play (12V power supply included) DMX controller for RGB LED that provides direct access to fixtures in two lighting zones. Tune color and brightness with the Light-Drive wheel.

Six memory slots allow you to save individual settings that can be recalled at the touch of a button or by remote control. Two sequence modes enable continuous replay of all saved color settings, as well as a preset color-phase function, which may be adjusted in replay speed.

Fully dimmable white mode button. See www.traxon-usa.com for details.

MOUNTING OPTIONS

PIPE MOUNT

Order **BLA** mount for 1/8" IPS pipe. Length must be specified. Includes ball aligner canopy rated for 75 lbs. and mounts to standard J-boxes (left).

Pipe longer than 8 ft. will be shipped in two pieces—one 8 ft. section plus a second section for the balance—supplied with a painted, threaded pipe coupler, with set screws (right).

DIMMING

- T5—14, 21, 24, 28 39, 54W
- Maximum 3.5 feet (or use remote ballast **B4SRB**).
- **SD1**—Lutron Eco 10
- **SD3**—Advance Mark X, 54W *only*
- **SD5**—Advance Mark VII
- **SD8**—Lutron Hi Lume FDB
- **SD9**—Lutron Eco System

MULTI-TUBE CONFIGURATIONS

Standard and custom solid acrylic collars may be added for decoration and earthquake code compliance.

4" BALLAST CONFIGURATIONS

