

# RETROFIT DOWNLIGHTS

## Retrofit Audit Form | Trim Type

JOB:

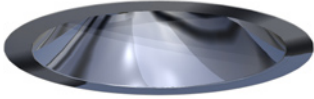
LOCATION:

DIMMING (Y/N):

Existing Lamp: Type      Wattage      I.D. (Inches)      O.D. (Inches)      Trim Type

Housing Type:

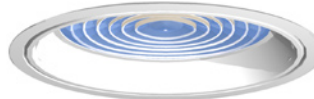
Which of these round, recessed trims does the existing fixture have?



**CAR** Clear Alzak® reflector  
**CAC** Clear Alzak® cone



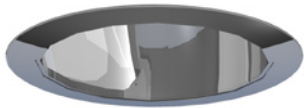
**GAR** Gold Alzak® reflector  
**GAC** Gold Alzak® cone



**FL** Lensed, regressed, flush or drop opal



**WE** Wall wash, eyelid



**WW** Wall wash, cutaway



**BF** Black baffle  
**BFR** Black baffle w/reflector



**TO** Open trim, no reflector or cone

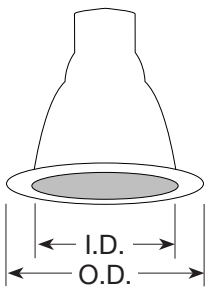


**EY** Eyeball or adjustable

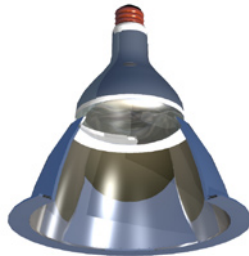
Does the existing fixture have a reflector, cone, or lens/reflector?



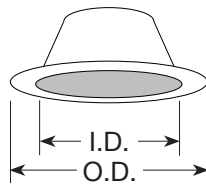
REFLECTOR



**I.D.** = inside diameter  
**O.D.** = outside diameter



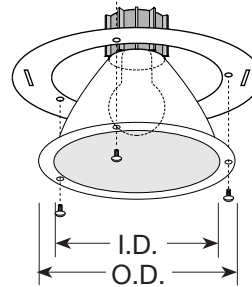
CONE



**I.D.** = inside diameter  
**O.D.** = outside diameter



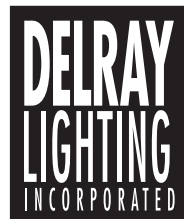
LENS/REFLECTOR



**I.D.** = inside diameter  
**O.D.** = outside diameter  
(space between holes)

(818) 767-3793 Voice      (818) 767-3789 Fax

www.delraylighting.com



AUG 2009

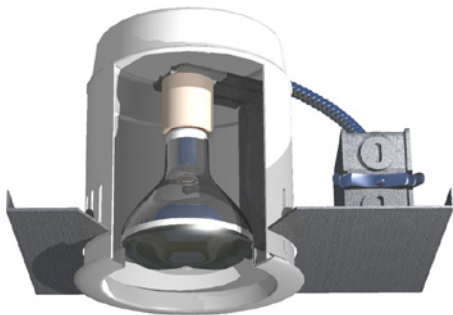
# RETROFIT DOWNLIGHTS

## Retrofit Audit Form | Housing Type

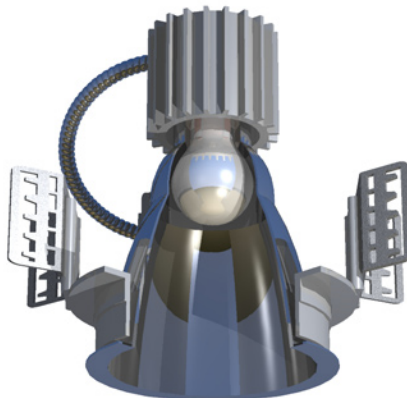
JOB:

LOCATION:

Which type of housing does the existing fixture have?



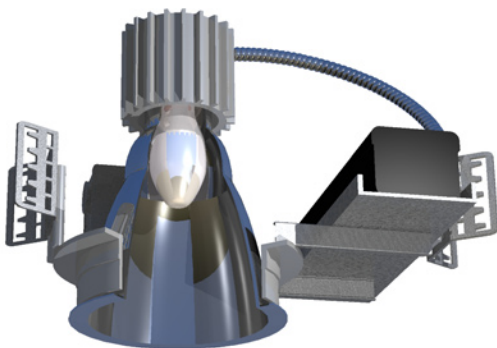
**Type 1** CAN type, held in frame with screws, may have reflector, cone or open trim.



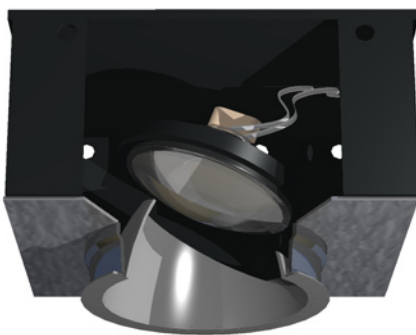
**Type 2** FRAME-IN type, holds reflector in place by friction clips or screwed to overhead bracket.



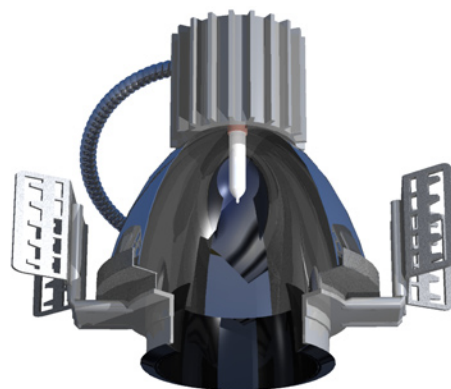
**Type 3** LENS type, lens is held by torsion springs, twist lock or hinged trigger latch.



**Type 4** HID fixture (shown in frame-in type, with external ballast).



**Type 7** PAR56/64 type, retrofits with color corrected PAR metal halides.



**Type 8** ELLIPSOIDAL type, top reflector is larger than opening and remains in ceiling.

(818) 767-3793 Voice (818) 767-3789 Fax

[www.delraylighting.com](http://www.delraylighting.com)

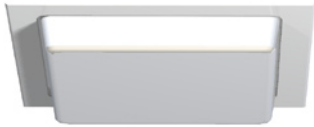
# RETROFIT DOWNLIGHTS

## Square Lens Audit

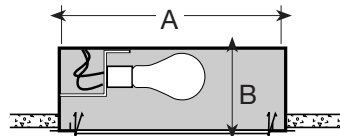
JOB:	Voltage	Dimming	Square RS	Cylinder RCV
LOCATION:	1-120V	Yes	RS113 / 1-13W	RCV113 / 1-13W
	2-277V	No	RS118 / 1-18W	RCV118 / 1-18W
			RS126 / 1-26W	RCV126 / 1-26W
			RS132 / 1-32W	RCV132 / 1-32W
			RS142 / 1-42W	RCV142 / 1-42W
			RS213 / 2-13W	
			RS218 / 2-18W	
			RS226 / 2-26W	
			RS232 / 2-32W*	
			RS242 / 2-42W*	

\* Requires remote ballast.

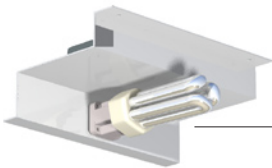
### SQUARE RS



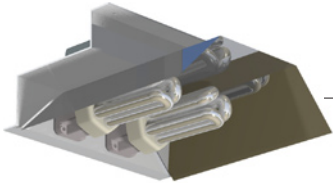
Square recessed cans shown with common trim types, Delray provides lamp and ballast holder for hard wire retrofit.



Measure interior space.



**RS100 series** Single lamp Square retro kit.



**RS200 series** Double lamp Square retro kit (shown with optional reflector R).  
2 x 32/42W models require remote ballast for proper thermal management.

**Dimming not available for Square or Cylinder retrofits.**

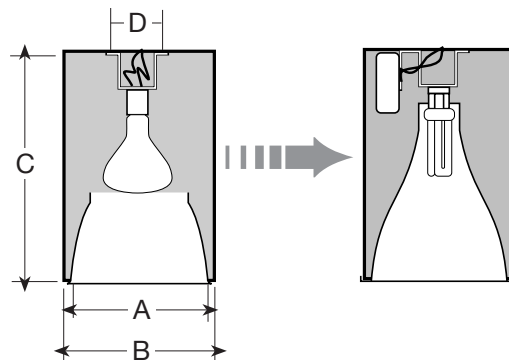
### CYLINDERS RC



Cylinders shown surface, pendant, and wall mount.



**RCV100 series**  
Cylinder retro kit with reflector.



Give inside and outside dimensions of cylinder, and distance between existing holes for socket bracket.