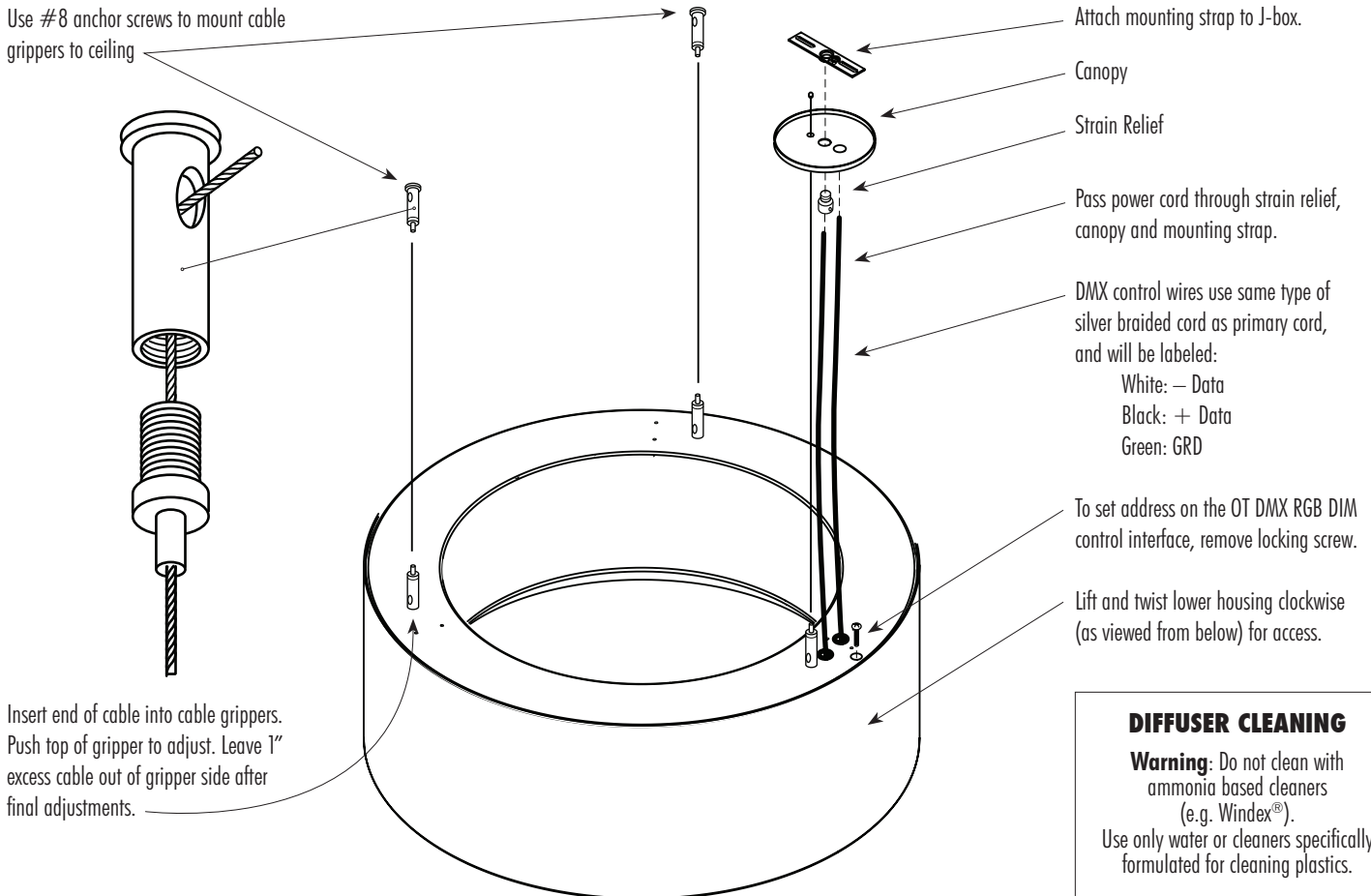


CYLINDRO 6501/6502

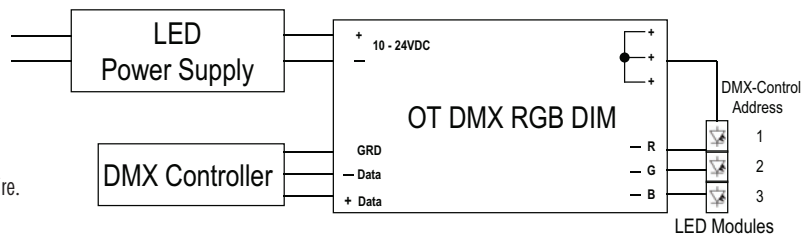
BDMXMOD Mounting Instructions

WARNING: disconnect main power at the source prior to installation!

Only qualified electricians should install DeRay Lighting products.



Wiring Diagram OT DMX RGB DIM (formerly OT DMX RGB)



OT DMX RGB DIM may be controlled by DMX controllers provided protocols meet USITT DMX-512A or DMX512 (DIN 56930-2).

Wiring Requirements:

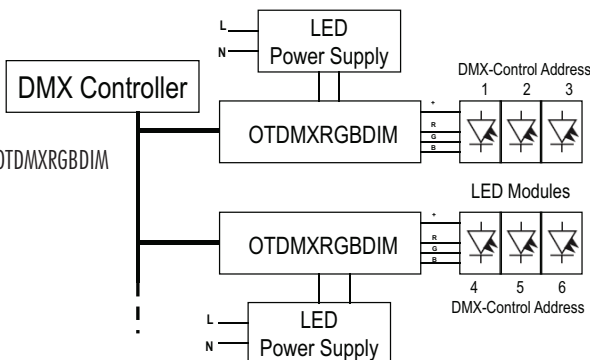
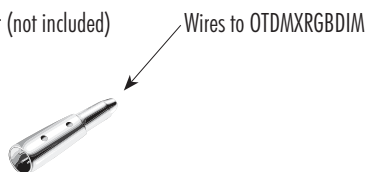
Input and load wires:
Use 16-18AWG solid or stranded wire.

Control Wires:

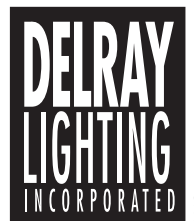
Use a connector to join DMX cable from DMX controller to 16-18AWG solid or stranded wire to OT DMX RGB DIM

Ex: XLR 3-pin male connector (not included) to OT DMX RGB DIM

Connect to XLR 3-pin female connector



Note: Refer to DMX specification for installation limitations.



Technical data:

REFERENCE	OT DMX RGB DIM
For LED modules:	With respect to the output conditions: LINEARlight Colormix; LINEARlight Colormix Flex, BACKlight and appropriate modules
Supply input voltage range nom.:	10.5 – 24V DC
Supply input voltage range min - max:	9.5 – 25V DC
Supply input current max:	6.0A
Power losses:	< 4W
Control:	DMX (SELV equivalent)
Protocol specification:	USITT DMX-512A, DMX512 (DIN 56930-2)
Electrical specification:	ANSI/TIA/EIA-485-A-1998
Galvanic separation:	No, SELV required (acc. to EIA-485)
Maximum voltage range (control input) without destruction of the device:	-7 – +12VDC
Start channel assignment:	3 decimal code switches (100/10/1)
Dimming modus:	PWM
Dimming range:	0–100%
Dimming curve:	Approximate to EN 60929:2004 E.4.3.7
Output current max:	2 A for each channel
Output load range:	0–21W per channel @ 10.5 V DC / 0–48W per channel @ 24V DC
Safety:	IEC 61347
Radio interference:	EN 55015
Immunity:	EN 61547
Protection class :	II
Temperature range:	–20° C to +50° C
No-load proof:	Yes
Short circuit protection:	Yes, electrically reversible for each channel
Overload protection:	Yes, electrically reversible for each channel
Overheating protection:	Yes
Supply input wire cross section:	0.75 mm ² to 1.5 mm ²
Input wire type:	NYM 3 x 1.5 mm ² / H03VV-F2 x 0.75 mm ²
Supply input connections:	1 pair of screw terminals with covering and strain relief
Control wire type:	NYM 3 x 1.5 mm ² / H03VV-F2 x 0.75 mm ²
Control connections:	1 pair of screw terminals with covering and strain relief
Output wiring cross section:	0.75 mm ² to 1.5 mm ²
Output wire type:	NYM 3 x 1.5 mm ² / H03VV-F2 x 0.75 mm ²
Output connections:	6 screw terminals with covering and strain relief
Geometry (l x w x h):	172mm x 42mm x 20mm
Fixing screw:	3mm or 3.5mm
Approvals:	CE; UR _{US}